

# FujiClean ACE 3000

## SEWAGE TREATMENT SYSTEM

JAPANESE TECHNOLOGY ✓

MADE IN AUSTRALIA ✓

ADVANCED. ✓

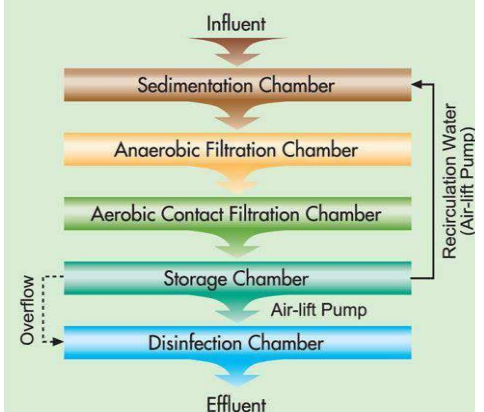
COMPACT. ✓

EFFICIENT. ✓



Advanced Secondary  
 Effluent Quality  
 <10 Mg/L BOD<sub>5</sub>  
 < 10 Mg/L Suspended solids  
 3000 LPD  
 20 EP @150 LPD

### Multi-stage Integrated Unit



## Compact and Efficient

This Advanced, Compact, and Efficient unit has been specifically designed using leading Japanese engineering technologies to achieve maximum operational efficiency. The ACE3000 is a whole household treatment plant.

Due to its light weight and compact design allowing for 3000 L per 24 hours, the Fuji Clean ACE system is extremely easy to transport and install. Overall weight of 550 KG makes for an easier delivery and installation.

## Commercial Adaptability

The ACE system can easily be customised according to site requirements. The ACE systems can be installed easily at various types of sites (not only domestic) which are not connected to municipal sewage supply; including mining sites, caravan parks, resorts, remote islands, service stations, schools, tourist cabins, community housing and other similar projects producing up to 3000 LPD of influent.

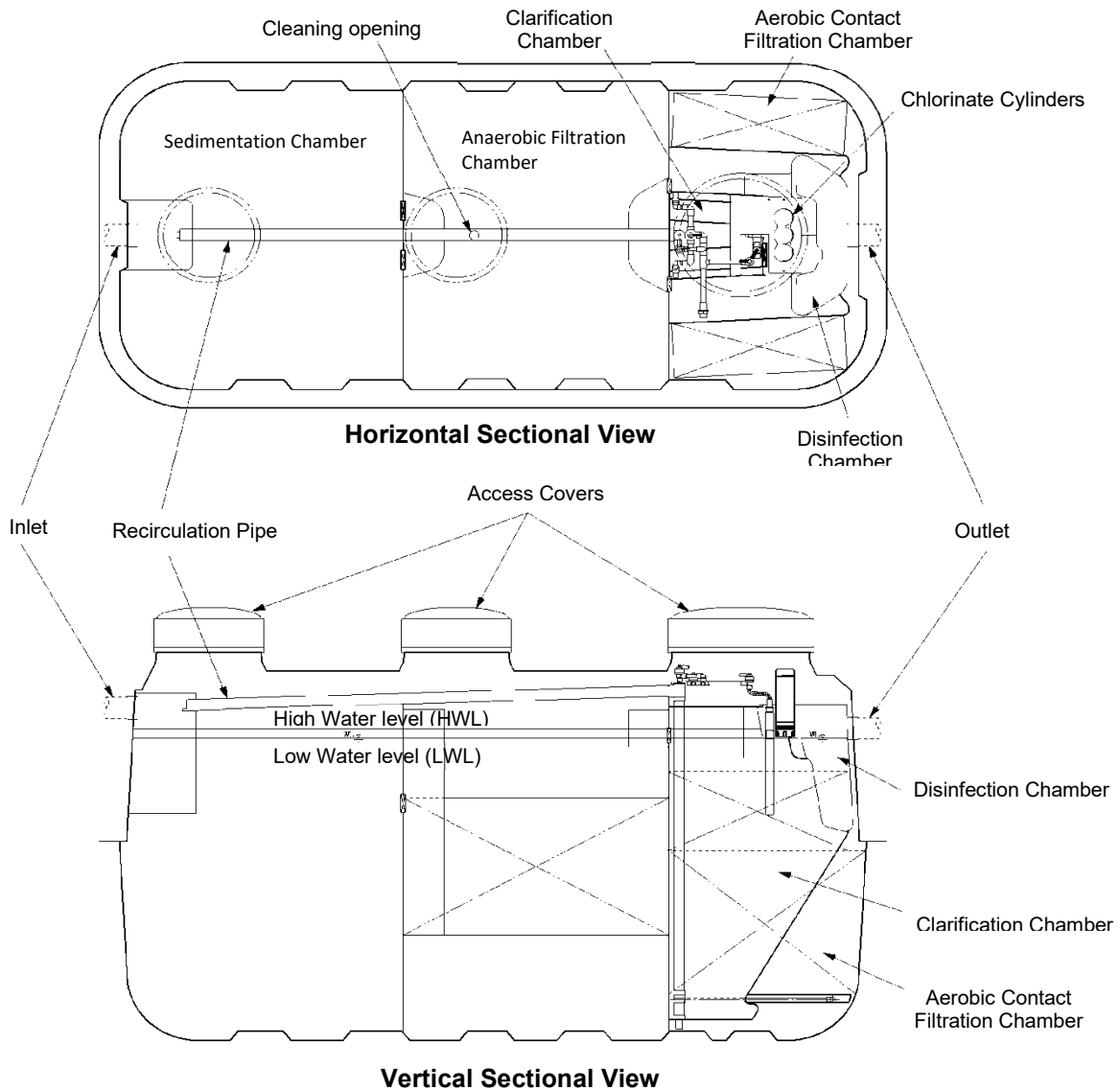
### Fuji Clean Australia PTY LTD

With over 60 years of experience, Fuji Clean is one of the world's leading manufacturers of high efficiency wastewater treatment systems with over 2 million systems (both domestic and commercial) installed around the world.

## SPECIFICATIONS ACE3000

Volume (L)		Dimensions (mm)	
Sedimentation Chamber	3,169	Max. Width	1,840
Anaerobic Filtration Chamber	3,177	Max. Length	3,880
Aerobic Contact Filtration Chamber	1,431	Max. Height	2,215
Clarification Chamber	703	Max. Height (with 150mmH risers)	2,365
Disinfection Chamber	44	Max. Height (with 300mmH risers)	2,515
Total Volume	8,524	Inlet Invert	500
Weight (kg)	550	Inlet Invert (with 150mmH /300mmH risers)	650 / 800
		Outlet Invert	600
		Outlet Invert (with 150mmH /300mmH risers)	750 / 900
		Dia. 100	
		Dia. 100	

Pump out chamber with emergency effluent storage required. Not shown here. 2000 ltrs.



### Fuji Clean Australia

With over 60 years of experience, Fuji Clean is one of the world's leading manufacturers of high efficiency wastewater treatment systems with over 2 million systems (both domestic and commercial) installed around the world.



# SOLAR AND POWER USAGE

## FujiClean ACE 3000 – Domestic / Commercial AWTS

The FujiClean ACE 3000 AWTS is 100% compatible with homes using a stand-alone solar power system. For the system to operate correctly it requires:

- A stable and continuous connection to a 10 amp 240V AC +/- 5% maximum and a frequency of 50Hz.
- A suitable inverter is to be used.

*NOTE: Must allow for the ACE3000 energy requirements.*

- The power supply to have sufficient capacity to run all components without the voltage supply dropping when the load is applied.
- A contingency plan if the house experiences long periods without power.

*NOTE: like any AWTS, prolonged periods without power will cause the bacteria to die off and result in system failure.*

A standard 20 person household uses an average of 2500 L to 3000 L per day (24 hrs)

**FujiSub 4520 submersible pump** with 20m head has a flowrate of 45L/min.

An average pump cycle for the FujiClean ACE 3000 is 20 minutes. Therefore with average loading, the FujiSub 4520 will activate and cycle 2-3 times per day for 20 minutes. Used for subsurface irrigation disposal. Averages may differ per household

**FujiSub 756 submersible pump** with 8m head has a flowrate of 25L/min.

An average pump cycle for the FujiClean ACE 3000 is 36 minutes. Therefore with average loading, the FujiSub 756 will activate and cycle 2-3 times per day. Used for surface irrigation disposal. Averages may differ per household

**MAC 200RII Air Blower** runs 24 hours/day and provides 200L of aeration per minute.

Electrical Component	Startup Amps	Run Wattage / Amps	Daily Usage max
MKII Treatment Monitor Unit	3 W	3 W	24 hours
MAC200 RII Air Blower	Less than 1 A	140 Watts   0.53 A	24 hours
FujiSub 756 Submersible Pump	Less than 3.0 amps	550 watts   2.1 A	2 hours
FujiSub 4520 Submersible Pump	Less than 5.5 amps instant	800 watts   3.2 A	1.2 hours
FujiSub 5025 Submersible Pump 50 LPM at a 25 mtr head	Less than 7.0 amps	1000 watts   4.0 A	1.0 hours

**NOTE: Only one type of submersible pump is required.** If you require any further information on the FujiClean ACE 3000 energy requirements please contact FujiClean Australia Head Office on [1300 733 619](tel:1300733619) or [info@fujiclean.com.au](mailto:info@fujiclean.com.au)

